

AirProce AirProce Company Limited

Website: www.airproce.com.hk

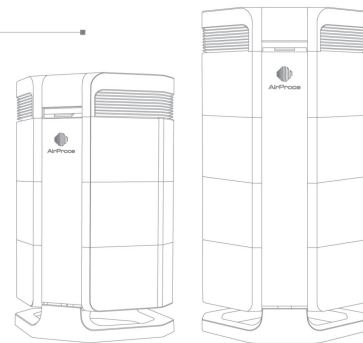
Service Hotline: +852 2755 8899

Email: info@airproce.com.hk



USER MANUAL

AirProce AI-3xx/6xx/7xx/9xx Series



Enjoy Your Every Breath!.

Contents

Important Safety Instructions	1
Air Cleaning Systems and Indoor Air Quality	2
Preparation	3 - 7
Package Contents	4
Name of Each Part	5
Unpacking	6
Install Filters (for AI-700/730/900/930/960 Use)	6
Optimum Location	7
Connect Power Supply	7
Usage	8 - 18
Get Started	8
Settings and Quick Start Guide	9 - 11
Remote Control	12
Sensor	13
Filters	14 - 17
Body Induction Receiver	18
Care and Maintenance	18

Important Safety Instructions

Before using your AirProce air purifier, basic precautions should always be followed, including the following:

- 01.** Do not use outdoors.
- 02.** Do not soak the air purifier in water or other liquids, or splash water on it.
- 03.** Make sure the password lock open where kids could reach the air purifier.
- 04.** Make sure the voltage of the air purifier indicated corresponds to the local voltage before you connect it.
- 05.** Do not touch power plug with wet hands. Always disconnect the power supply from the air purifier by unplugging the power cable before adding or removing parts and before cleaning.
- 06.** Do not operate this air purifier under the following circumstances: it has a damaged cord or plug, the fan motor fails to rotate and doesn't work properly, it has been dropped into water.
- 07.** Only use this air purifier for its intended purpose of air purifying in non-industrial environments.
- 08.** Do not use this air purifier in areas with very high concentrations of dust or powder to prevent the danger of dust explosions.
- 09.** Do not use this air purifier in explosive areas.
- 10.** Do not use the air purifier in very humid place (e.g. bathroom, toilet and laundry room etc.) or place next to a humidifier.
- 11.** Do not use the air purifier near sources of heat, such as radiators, fireplaces or ovens.
- 12.** Keep the power cord away from heated surfaces.
- 13.** Do not obstruct the air inlet and air outlet of the air purifier.
- 14.** Do not place the air purifier on a soft surface such as bedding or other soft furnishings.
- 15.** Only use this air purifier in an upright position.
- 16.** Only use attachments or filters recommended by AirProce.



Air Cleaning Systems and Indoor Air Quality

Air Cleaning Results

Air Cleaning system plays an important role when it comes to improving indoor air quality. Although air purifiers maybe advertised and sold to be suitable for use in specific indoor environments and to deal with specific indoor air quality problems, the manufacturer and distributors make no claim as to the specific air cleaning results that achieved under the user's individual operating conditions.

Important factors which will influence the air quality improvements that can be achieved in an indoor environment with air purifiers include:

Type of air pollutants

- Intensity of the pollutant source(s)
- Pollutant concentration
- Size of the indoor environment (room size)
- Operating speed of the air purifiers
- Number of air purifiers placed in the indoor environment Saturation state of the filters in the air purifiers

Improving Indoor Air Quality

An air cleaning system cannot do the complete job in improving indoor air quality, during the course of using, it should be noted that controlling the sources of pollution and making sure proper ventilation are critical components in improving the efficiency of air purification.

To tackle any indoor air quality problem, you have to keep the following three-step strategy in mind:

- a.** Eliminate or reduce the source of air pollution as much as possible. Source control is by far the most effective way to improve indoor air quality, since it sets out to deal with air pollution at the point of origin.
- b.** Proper ventilation is also extremely important. Cleaning your air is not able to reverse the fact that the air is converted to carbon dioxide (CO₂). air purifiers are not a substitution for sufficient ventilation, so proper ventilation will ensure that sufficient fresh air is entering the room from outside.
- c.** The best way to improve the indoor air quality is to use air cleaning system. The purification technology of AirProce is able to customize a most effective and convenient configuration for you. It makes sure the air cleaning system you were purchasing can clean enough air to cope with your room size by evaluating the level of air turnover. The actual hourly air volume cleaned by AirProce should be at least double the air volume of your room. If the rate at which pollutants enter the room air is high or the indoor air quality requirements are stringent, the hourly air delivery of the system needs to exceed the room air volume several times. To achieve that level of air turnover, it may be necessary to employ more than one AirProce system.

Consult a qualified specialist to determine an effective and comprehensive indoor air quality strategy.

Kind Remind

AirProce intelligent air cleaning system is easy to use. To clean effectively the air quality of the location where you are using the system, we recommend that you follow the below common-sense guidelines.

There contain some mistakes when many people using their air cleaning system.

Mistake1: Run the air cleaning system periodically rather than run it the whole day.

Correct approach: If you spend the whole day at room, we recommend that you leave it on for constant air cleaning system to ensure a continuous supply of fresh and clean environment. AirProce is able to be run 24 hours every day. In addition, AirProce system are designed for phenomenally low power usage, it even only costs about the same power as a single light bulb, depending on the model and the operating speed.

Mistake2: After start with one air cleaning system and move it from room to room throughout the day.

Correct approach: To ensure a most effective way to clean the indoor environment, please place the system in the area where you and your family will spend most time. In addition, we recommend that you not move the system from a seriously polluted place to another place of a relatively better air quality, because the filter after absorbing too much pollution will not truly effectively clean the environment in a short time. It is better place the AirProce system used only in the serious polluted place.

How the AirProce System Works (take AI-300 for example)

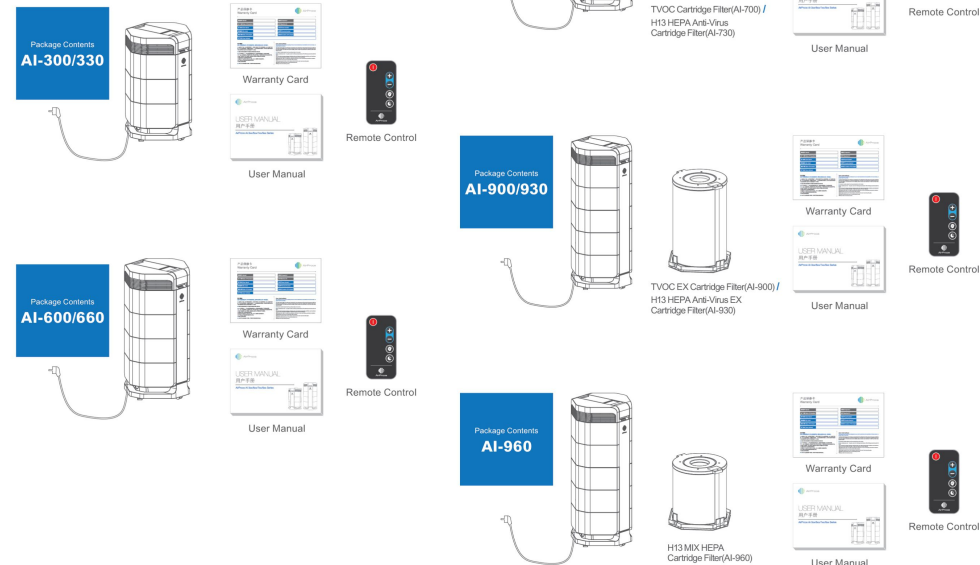
- Room air is drawn into the system via arched openings at the base.
- The air is drawn in through an MIX Pre-Filter that removes most airborne particles and gaseous pollutants.
- There is a powerful centrifugal fan which sandwiches between the filters at the heart of the system.
- The air passes through H13 HEPA Filter which eliminates particles in diameter of equal and above 0.3 micron in size, and effectively removes dust including respirable particles, dust mites, tobacco smoke, dander, pollen and other airborne pollutants.
- Purified air is returned to the room via the air outlet opening.

Improve Purification Efficiency by Turning into Max Mode

Please turn to manual mode and max fan speed(gear 6) to reach the maximum device status. Also, you can further improve the purification efficiency targeting at certain pollutants by adjusting the filters by following instructions as below:

Model	Target	Control of Particulate Matter	Control of Gaseous Pollutants
AI-300		Gear 6, under Manual Mode	Take off H13 HEPA Filter, Gear 6, under Manual Mode
AI-600		Take off TVOC Filter, Gear 6, under Manual Mode	Take off H13 HEPA Filter, Gear 6, under Manual Mode
AI-660		Take off Humidifying Module, Gear 6, under Manual Mode	Take off Humidifying Module, Gear 6, under Manual Mode

Package Contents



Name of Each Part

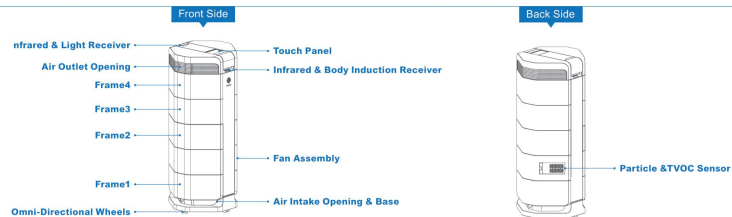
AI-300/330



AI-600/660
AI-700/730



AI-900/930
AI-960

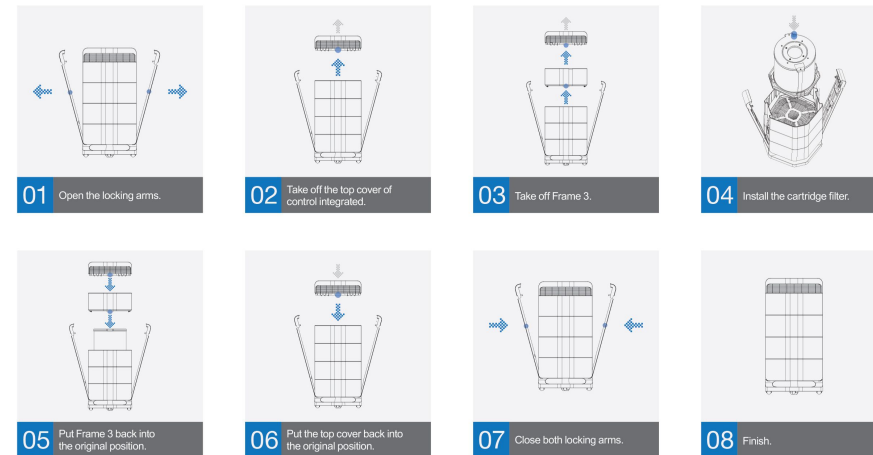


Unpacking

Cut up the seal of box, open the top of the box and remove the square styrofoam pad. All related accessories and product literature are supplied in the Styrofoam contained in the box. Keep the packaging for future transport and service needs.

Cut up the seal of filter box, open the top of the box and remove the square styrofoam pad. Unpacking the filter so as to install it into the air purifier.

Install Filters (for AI-700/730/900/930/960 Use)



Optimum Location

When choosing a suitable location for the air purifier, keep the following considerations in mind: Selecting most suitable space for the air purifier which depends on where the focus of the air cleaning efforts is.

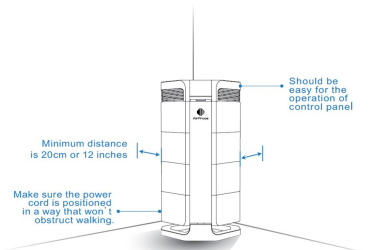
Two main considerations are as below:

01. Using time in a specific room.

02. Location of main air pollution source. Generally, the closer the air purifier is located to the air pollution source, the better the air cleaning performance in the room. Although air cleaning result may be achieved in adjacent rooms, the main air cleaning will take place in the room where the air purifier is located. For the best air cleaning results in adjacent rooms, make sure the doors to these rooms are left open widely.

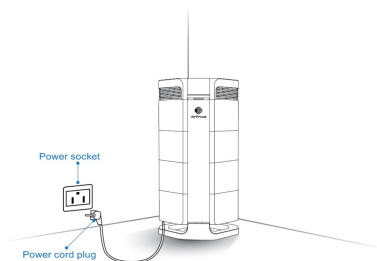
For best performance, the air purifier should be located ideally 30cm away from the nearest vertical surface, such as a wall or a cupboard.

Generally, the more centrally the air purifier is positioned, the better the performance will be. Locate the air purifier close to a wall socket and make sure the power cord is positioned in a way that it does not present an obstacle.



Connect Power Supply

Plug the connector-end of the power cord into a wall socket or power strip. The only way to completely disconnect the power is to unplug the power cord.

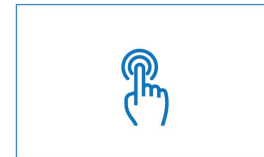


Get Started

(Pictures are only for reference)

1 Turn On Your Device

Connect power supply and double tap on the touch panel to start the air purifier.



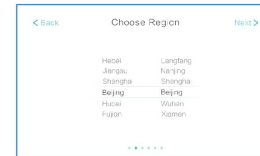
2 Choose Language

Tap to choose language, skip to the next page.



3 Choose Region

Tap to choose region, skip to the next page.



4 Choose a WLAN Network

Tap a WLAN Network to connect. Tap "Next" to skip to the next page.



5 Create a Password

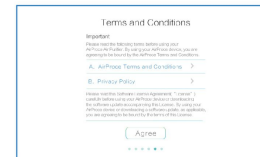
Tap numbers to enter password. Re-enter it if correct, skip to the next page.



If wrong, retry entering password.

6 Terms and Conditions

Tap "Agree" to skip to the next page.



Settings and Quick Start Guide (Pictures are only for reference)

1 Main Interface

After finishing the initial settings, you may see the main interface without connecting WLAN.



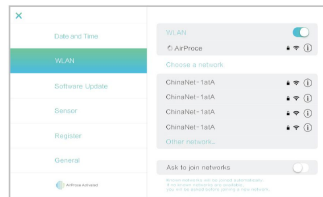
- Swipe up to connect to the device. (P31)
- Swipe down to enter Control Interface. (P30)
- Swipe up twice to enter Filter Interface. (P34)
- Swipe down twice to enter Data Interface. (P30)

Connect WLAN successfully, then automatically skip to the main interface displaying outdoor air quality data.



2 Wireless Connection

Tap on the menu icon "≡", then tap "WLAN" to connect.



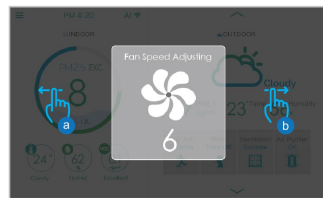
Turn on the button and choose a network to enter the password interface. Enter the password and tap "Join".



*If you don't have WLAN at home, you're unable to use APP to connect with and control the air purifier.

3 Control Interface

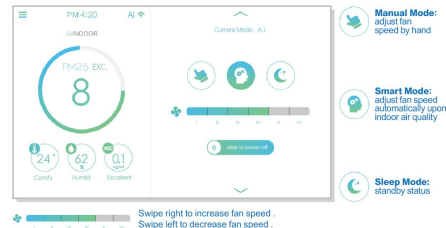
3.1 Quick Fan Speed Control Guide



a Swipe left to decrease fan speed on the main interface.

b Swipe right to increase fan speed on the main interface.

3.2 Without humidifying module in the air purifier, Control Interface includes Manual Mode, A.I. Mode and Sleep Mode.
Under A.I. Mode, max fan speed is gear 5. If you want to turn to gear 6, please quit A.I. Mode and enter Manual Mode.



3.2 After installing humidifying module in the air purifier, Control Interface includes Manual Mode, A.I. Mode (particles purification& humidification) and Sleep Mode.
Under A.I. Mode, max fan speed is gear 5. If you want to turn to gear 6, please quit A.I. Mode and enter Manual Mode.



4 Data Interface

Swipe down twice on the main interface to enter Data Interface.



a Tap "Learn More" to check the history data of the indoor and outdoor air quality.



5 Connecting to the Device

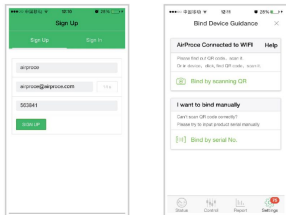
5.1 Download APP

IOS user: search "AirProce" in APP Store or scan QR code below(open in Safari).
Android user: search "AirProce" in official website "www.airproce.com" or scan QR code below.



5.2 Connect Device

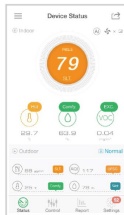
Open the AirProce APP and get into the "Sign up" Page. Input your username and Email, then press "Send Code". Once received the 6-digits security code from your Email, input the code and finish the registration.



After login, press "Bind by scanning QR" button and scan the following QR code on the "Connecting to the device" Interface.



You will see the page below with the sample data after connected.



Remote Control

The AirProce system can be controlled by handheld remote control which can be used to:

Switch the system on and off

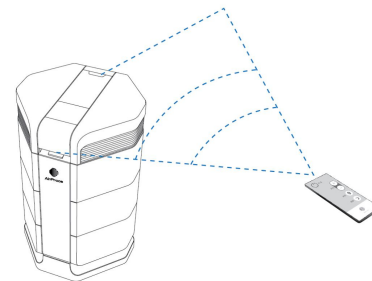
Select the desired fan speed

Activate and deactivate the intelligent mode

Activate and deactivate the sleep mode

Getting the Best Transmission Results

The IR(infrared) receiver of the AirProce system is positioned underneath the touch panel cover. In order to receive the better signal transmission, the remote control should be pointed at the touch panel when a remote command is being carried out. Alternatively, the remote control should be pointed at a surface like a wall, ceiling or window, from that the signal can bounce off in a right angle (90°) to the electronic touch panel.



Replacing the Battery of the Remote Control

When the battery becomes weak, the transmission results will deteriorate and the battery should be replaced. The remote control requires one CR2025 battery. The battery compartment is located at the bottom end of the remote control. To press the small lever to the side, and slide the battery compartment out. Remove the used battery and insert the new one.



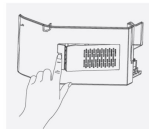
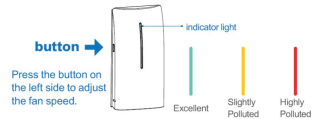
The particle & TVOC sensor can be used both as built-in sensor and handheld sensor.

Built-In Sensor

After you plug the power cord and start the device, the AirProce air purifier can display real-time indoor air quality data which the built-in sensor detects via the touch panel or APP.

Handheld Sensor

After opening the housing and taking off the handheld sensor, you can monitor the indoor air quality wherever you want. The data can also be sent to the touch panel and APP in real time.(connect WLAN successfully to connect the sensor)



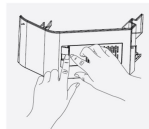
01 Press the switch button to open the housing.



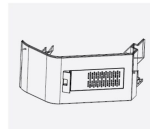
02 Take off the sensor.



03 Put the sensor back into the original position.



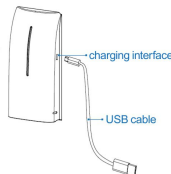
04 Press the sensor with right hand, then press the housing with left hand.



05 Finish.

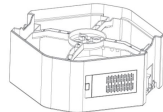
Charging

- 1.Connect the power supply of the air purifier to charge the built-in sensor.
- 2.Charge the handheld sensor with a USB cable.



Sensor Maintenance

After long-time use, the sensitivity of the sensor decreases because of dust, pollen and etc..



We suggest using vacuum cleaner to remove such particles every three months.

Automatic Matching Mechanism

It takes 10 seconds to match the new sensor with AirProce air purifier.

Filters

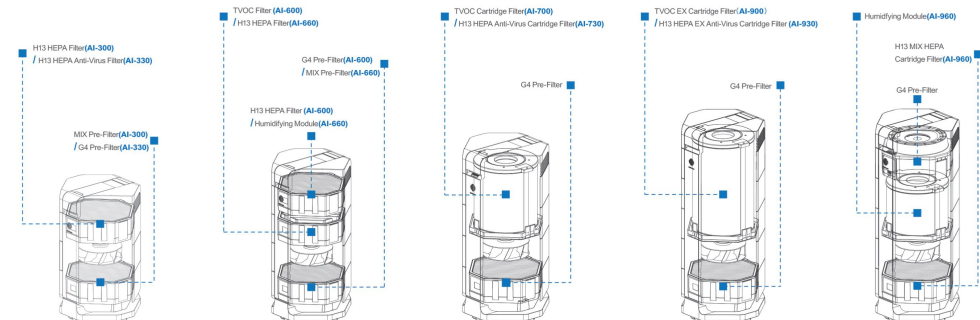
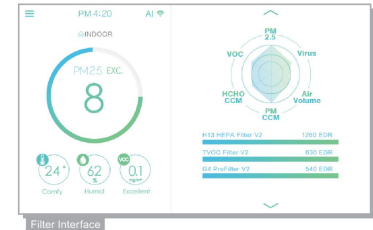
Description of Removable Components

The AirProce system features a modular housing design which enables the easy replacement of all filters in seconds. Filter Interface displays the position of each filter, useful life and features.

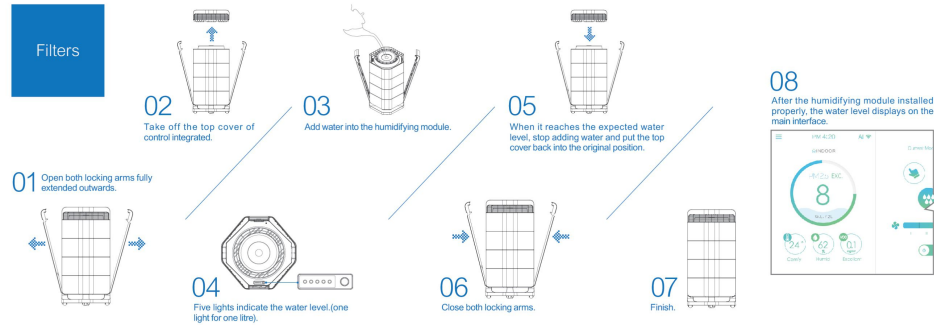
Filters

The AirProce air purifier is equipped with a Filter Life Monitor which is designed to assist you in obtaining the basic information of filters. The filter life displayed on the touch panel can be found through the setting menu, which is indicated by remaining days. For instance, remaining life of each individual filter, production date, air outlet function features etc., all of which will be achieved automatically by system. In addition, it is important to look out for the signs of expired filters and replace filters earlier if necessary.

- Increased operating noise
- Decreased airflow
- Clogged filters
- Increased odor presence



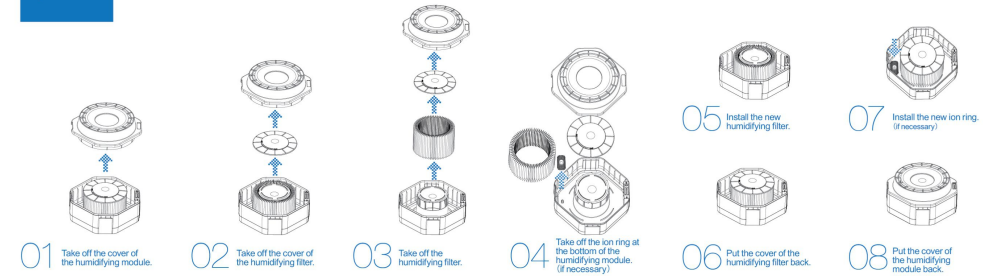
Filters



Add essential oil if necessary

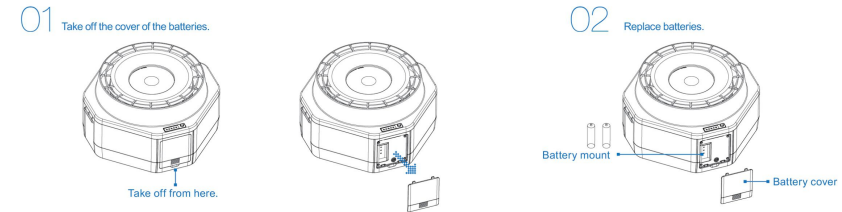


Humidifying Filter Replacement *



*Suggestion: replace humidifying filter every three months.

Battery Replacement *



*Under normal usage, the useful life of the batteries is 2 years.

Ordering Replacement Filters

To confirm the appropriate article numbers of your filter before ordering replacement filters, the numbers and names are stated on the side for the filter. To ensure a quality product, you can purchase AirProce filters at authorized franchised stores.

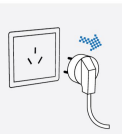
Attention: If filter are unrecognized by system, the filters are probably not official products, not recommended.

Opening and closing the housing and replacing the filters

The stacked housing elements are held together by two locking arms that hook into the diffuser. To open the system, follow the steps below.

Step01.

Disconnect the AirProce system from the power supply before attempting to open the system.



Step02.

Press the button on the outer side of the locking armhead enough to release the arm from its snap-in position.



Step03.

Open both locking arms fully extended outwards. To close the housing, simply push the locking arms inwards simultaneously until a clicking sound can be heard.



Step04.

Take off the top cover of control integrated.



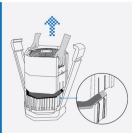
Step05.

Tilt the filter frame upward to replace.



Step06.

Pull the fan out by the handle on the outer side, and make sure to push back the frame progressively into the housing along the chute.



Step07.

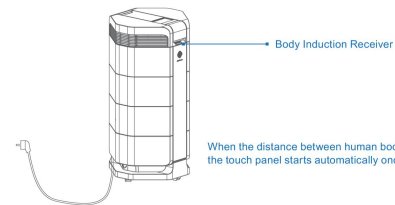
Replace the filter by lifting it at the bottom frame upward.



Discarding Used Filters.

Used filters can normally be put into the regular household trash for disposal. If the system may have been exposed to potential hazardous substances, the filter may have to be disposed of as hazardous waste. Please refer to local regulations and laws for proper disposal.

Body Induction Receiver



When the distance between human body and AirProce air purifier is less than 20cm, the touch panel starts automatically once the body induction receiver receives and sends the signal.

Care and Maintenance

Cleaning the Housing

- .Unplug the AirProce system before attempting to clean it .Use a soft and clean cloth for cleaning.
- .Use a soft brush attachment to clean the inlets.
- .For water soluble stains, use a window cleaning fluid
- .For the removal of tough, non-water soluble stains, use a silicone spray.
- .Do not use any aggressive or flammable cleaning agents such as bleach to clean the system

Maintenance-Free Fan

Do not try to repair or adjust any of the electrical or mechanical functions on your AirProce system by yourself. Please contact your local dealer or AirProce manufacturer for warranty information. The AirProce system is equipped with a maintenance-free fan motor.